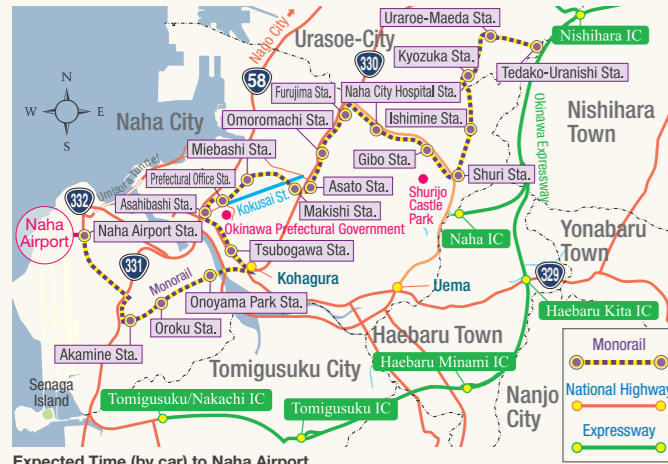
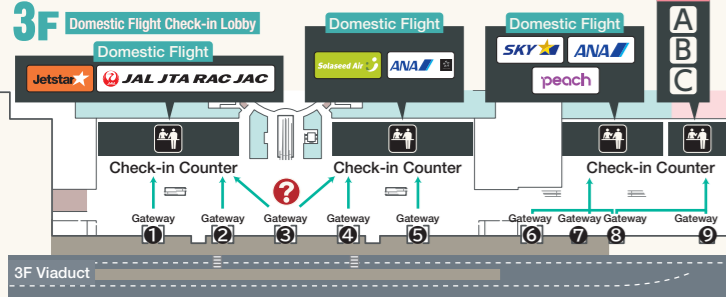


● Access Map around the airport

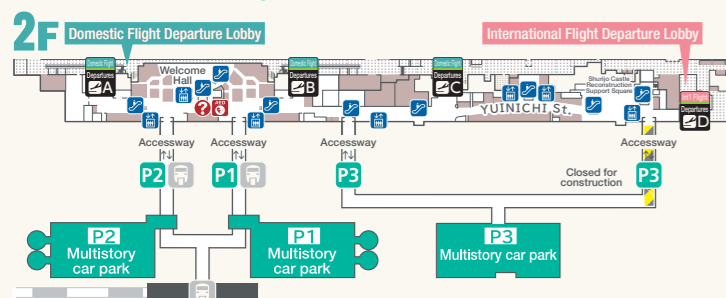


Expected Time (by car) to Naha Airport
 About 15 min. from Kokusai Street/ Tomigusuku/ Nakachi IC to Naha Airport.
 About 30 min. from Naha IC. About 40 min. from Shurijo Castle Park.
 * Times shown above are average during time of light traffic and provided as reference.
 Please allow yourself extra time in case of traffic jam, especially when moving in Naha City.

● Guide map around Domestic Flight 3F Viaduct Gateway



● Access to Parking Lot



P Parking Lot

Open hour	6:00 - 24:00 (18 hr.) * Business hours may change due to flight conditions.	
Parking Capacity	Multistorey Parking Lot (P1) 621 cars	Multistorey Parking Lot (P2) 625 cars
	Multistorey Parking Lot (P3) 1,226 cars	

● Parking Fee

Multistorey Parking Lot (P1, P2, P3)	24 hours max (Busy)	JPY2,200
First 30 min.	Free	(Regular) JPY1,600
30 min. - 1 hr.	JPY 300	JPY2,200
1hr.-1.5hr.	JPY 400	JPY1,600
Every 30 min. (Regular: up to 7.5 hr.) (Busy: up to 10.5 hr.)	JPY 100	

welcome NAHA AIRPORT BUILDING CO., LTD.

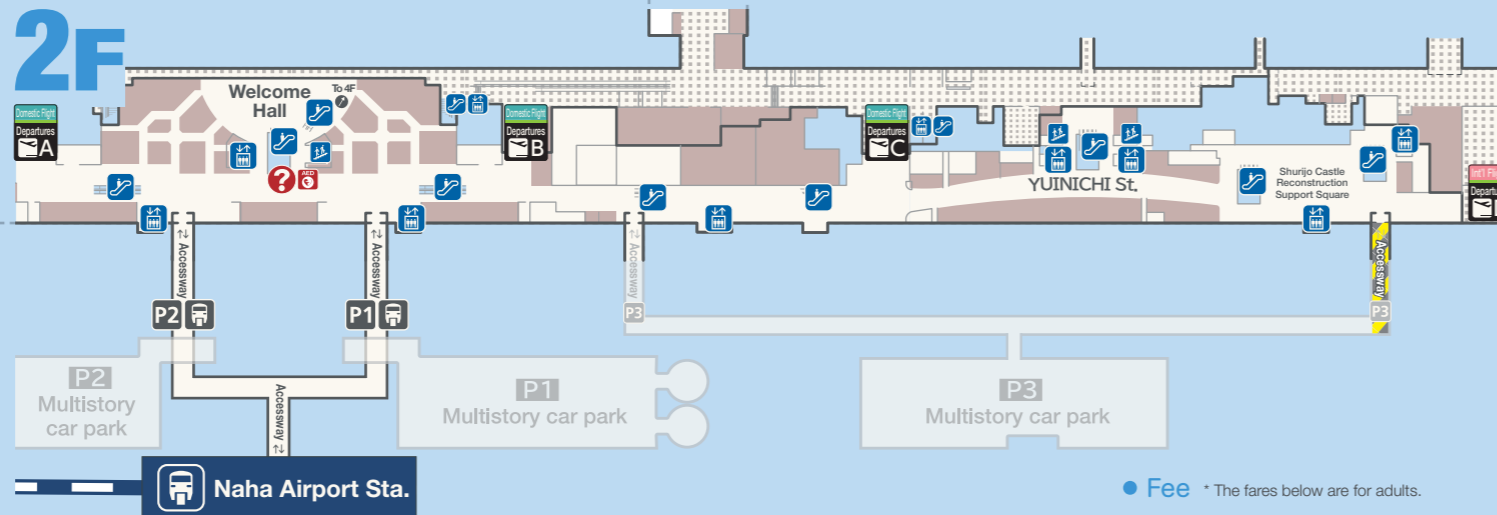
150, Kagamizu, Naha, Okinawa, 901-0142
 [Information] TEL 098-840-1179

The data listed here is based on the information as of Feb. 2026 and may possibly change in the future. Issued in Feb. 2026

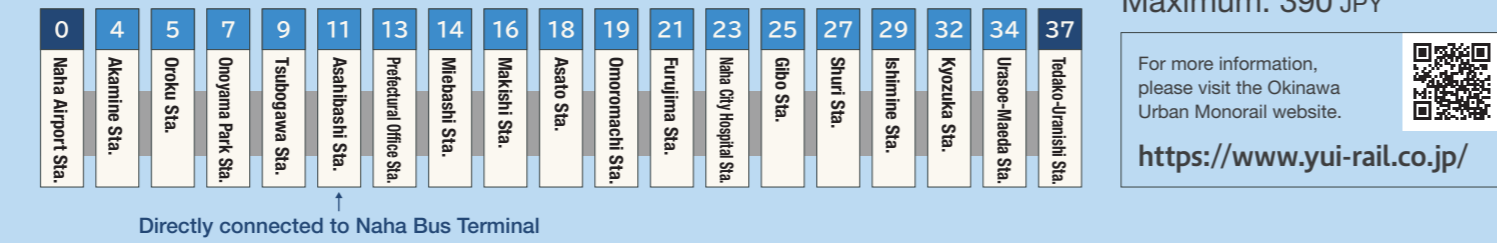
Transportation

Route by monorail

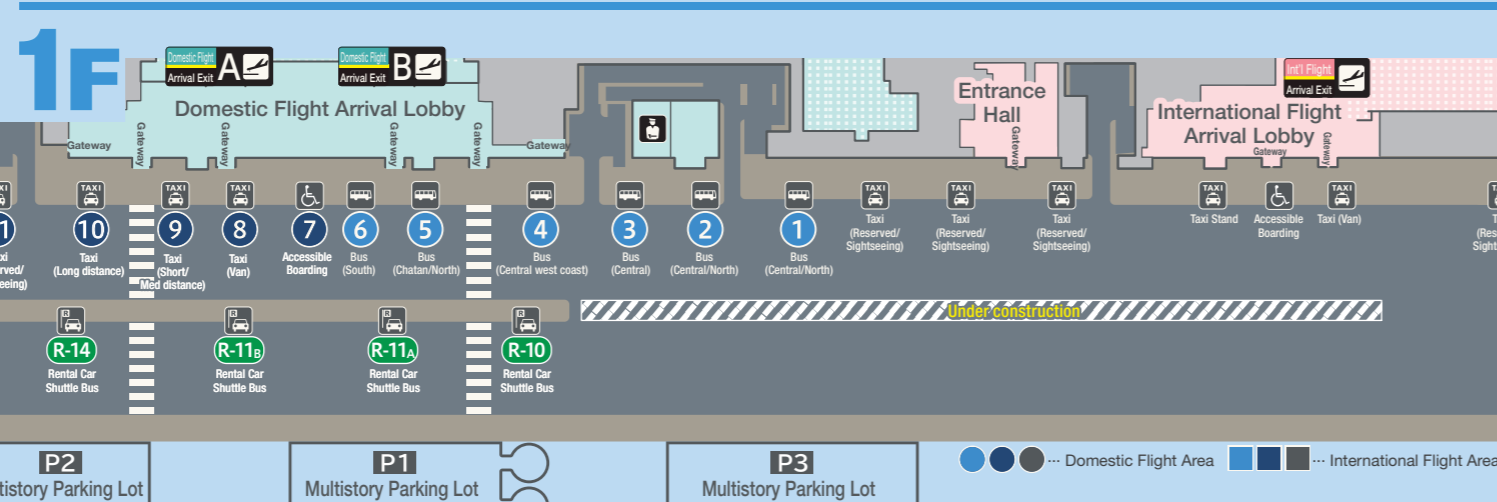
● Route for monorail station



● Travel Section



Route by bus/ taxi



Bus Stop

1 Central/Northern Area (Shuttle/Limousine/Express Bus)	• LIM-A: GINOWAN/Chatan • LIM-B: Yomitan • LIM-C: Onna • LIM-CD: Onna-Nago • LIM-DE: Nago-Motobu • OAS-RSL (Resort Liner) • YKB-888: Airport • YKB-HLT: Hilton Sesoko Direct Service • OKTO: JUNGGLIA EXPRESS • TK06: JUNGGLIA EXPRESS
2 Central/Northern Area (Express Bus)	• No.111: Express Bus • No.117: Express Bus (Direct to Churaumi)
3 Central Area	• No.113: Gushikawa-Airport • No.123: Ishikawa-Airport • No.125: Futenma-Airport • No.152: AEON Mall Okinawa Ryoum Express • No.190: Chibana-Airport
4 Central West Coast Area	• No.26: Ginowan-Airport • No.99: Ameku-Shintoshin • No.132: Convention Center-Airport • TK01: Ha-Le-Express(Northbound) • TK02: Umikaji Liner(Northbound)
5 Chatan/Northern Area	• No.120: Nagonishi-Airport • No.143: Chatan-Airport • TK05: Chatan Direct Shuttle • KAR-CHA: Chatan Direct Shuttle
6 Southern Area	• TK01: Ha-Le-Express(Southbound) • TK02: Umikaji Liner(Southbound) • TK03: Ryukyu Hotel Airport Limousine • TK04: Senagajima Hotel Airport Limousine • No.83: Gyokusendo • No.95: Airport-Ashibina • No.189: Itoman-Airport

Taxi Stand

9 Short/Medium distance	• Naha City • Urasoe City • Ginowan City • Nishihara Town • Nakagusuku Village • South Area
10 Long distance	• Central area north of Chatan Town, Kitanakagusuku Village and beyond. • North Area

To Naha Bus Terminal/ by Taxi
 Expected Time: about 10 min.
 Fee: about 1,400 JPY

Airport Limousine Bus Domestic Flight: 1F
 Convenient Limousine Bus that goes straight to the hotel
 098-869-3301 (11:00 - 18:10)

Naha Bus Information Center Domestic Flight: 1F
 Information on one-day ticket, bus tours, bus routes, and other services.
 098-840-1613 (9:00 - 17:00)

Facility Guide

To customers with children/with disability

Accessible Restroom
 Domestic Flight: 1F, 2F, 3F, 4F
 International Flight: 1F, 2F, 3F, 4F

Restroom with facilities for people with disabilities. Anyone can use this restroom.

Ostomate
 Domestic Flight: 2F
 International Flight: 1F, 2F, 3F

Resting Room
 Domestic Flight: 1F ☎ 098-840-1179
 International Flight: 1F ☎ 098-840-1350
 * Reservations are not accepted

Barrier-free Tour Center
 Domestic Flight: 1F ☎ 098-858-7760

Baby carriages and wheelchairs are available free of charge at the check-in lobby on 3F or at each airline center. Also, toilet for assisting dogs are set at the south side of domestic terminal 1F and the side of international terminal 1F. Please dial the above number for assistance.

Nursing Room
 Domestic Flight: 1F, Inside of 2F Gate, 3F
 International Flight: 1F, 2F, 3F

Located in the restrooms on the 1F, 2F, and 3F. Diaper changing tables, bottle warmers and private rooms for nursing are available. * Anyone may use the diaper changing tables.

Calm Down/Cool Down Space
 Domestic Flight: 1F ☎ 098-840-1179
 Reception/Information

Other services * Business hours may change due to flight conditions.

Information
 Domestic Flight: 1F, 2F, 3F ☎ 098-840-1179
 7:00 - 22:00
 International Flight: 1F, 3F ☎ 098-840-1350
 7:30 - 21:00

Lost-and-found
 Domestic Flight: Information 1F
 7:00 - 22:00
 International Flight: Information 1F
 7:30 - 21:00
 [Phone Inquiries]
 9:00 - 19:00 ☎ 098-840-1359

Baggage Storage (Yamato Transport)
 Domestic Flight: 1F ☎ 7:30 - 20:00
 0570-200-000 0120-01-9625
 050-3786-3333
 Telephone Reception Hours/8:00 - 21:00

Home Delivery Service
 Domestic Flight: 1F
 • Okinawa NX Air Cargo Service (OAS)
 9:00 - 19:00 ☎ 098-857-2202
 • Sagawa Express
 9:00 - 19:00 ☎ 080-3930-9851
 • Yamato Transport
 7:30 - 20:00 ☎ 0570-200-000
 0120-01-9625
 050-3786-3333

Before U Go
 International Flight Area: 2F ☎ 9:00 - 20:30
 050-3755-0258

Keikyu Ticket Vending Machine
 Domestic Flight: 2F (inside the gate)

LOUNGE HANA
 Domestic Flight: 4F ☎ 098-840-1727
 8:00 - 20:00
 Fee: Adult 1,200 JPY (without tax)

Special Lounge
 Domestic Flight: • Deigo/26 seats (Domestic Flight Area 2F, Departure Lobby ANA side)
 • Meeting room A, B/30 seats (Domestic Flight Area 1F, Arrival Lobby ANA side)
 International Flight: • Sango/15 seats (International Flight Area 1F, Arrival Lobby)
 Reservation/Website

Free Power Supply
 Domestic Flight: 2F
 International Flight: 1F, 2F, 3F

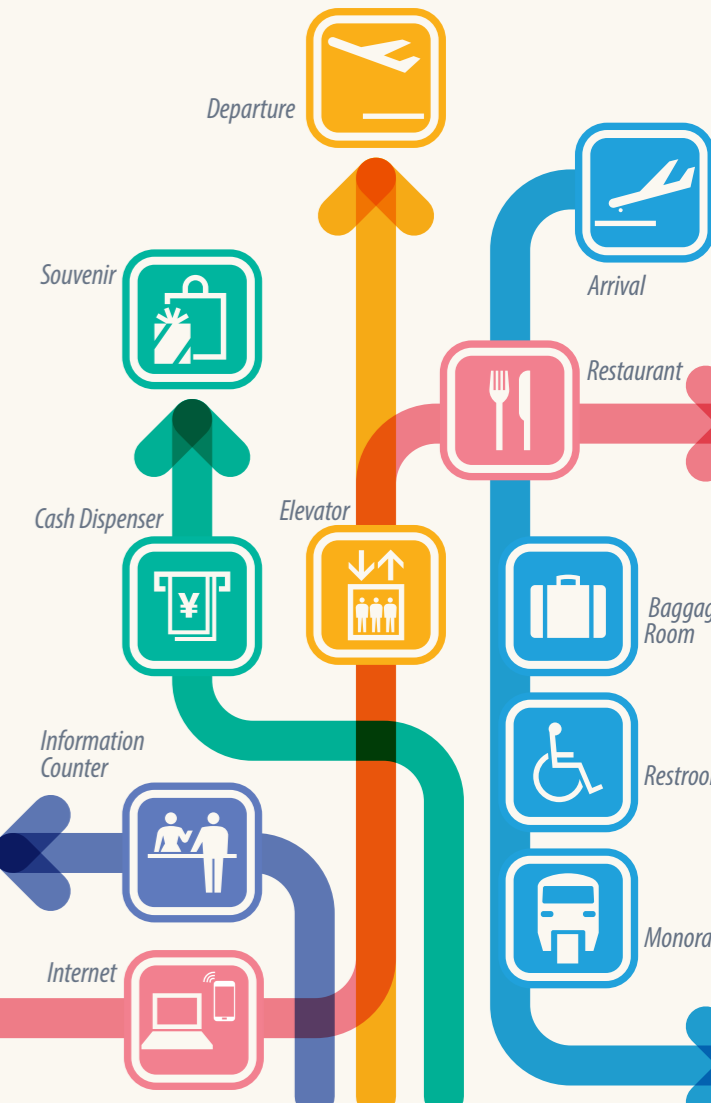
Prayer Room
 International Flight: 4F ☎ 098-840-1350
 7:00 - 21:30

A Japanese-style prayer room on the 4F of the international terminal is open to anyone looking for a quiet space to pray regardless of their religion.

English

OKA

Domestic Flight Area
 International Flight Area
 Naha Airport Passenger Terminal Building
Floor Guide Map
 Facilities, service information guide



welcome NAHA AIRPORT BUILDING

Bank/Police * Business hours may change due to flight conditions.

ATM/Cash Services

- The Bank of Okinawa
 <Weekdays> 7:00 - 22:00
 <Sat, Sun, holidays> 8:00 - 22:00
- Bank of the Ryukyus
 <Weekdays> 7:00 - 22:00
 <Sat, Sun, holidays> 8:00 - 21:00
- Japan Post Bank
 <All days> 6:00 - 23:55
- Seven Bank
 <Weekdays> 6:00 - 24:00 (Domestic Flight Area)
 7:00 - 22:00 (International Flight Area)
- Aeon Bank
 <Weekdays> 6:00 - 24:00
 <Sat, Sun, holidays> 6:00 - 24:00

Automatic Foreign Currency Exchanging Machine
 Domestic Flight: 1F ☎ 7:00 - 23:00

11 foreign currencies banknote can be exchanged into Japanese Yen. Corresponding currency: U.S. dollars, Euro, British pounds, Australian dollars, RMB, Korean won, Taiwan NT, HKD, Singapore dollars, Canada dollars, and Thai bahts.

Currency Exchange
 International Flight: 2F (until Mar 31), 1F (from Apr 1)
 • Travellex Naha Airport, Arrival Lobby
 7:30 - 20:30 ☎ 098-987-0865
 * Foreign currency exchange only

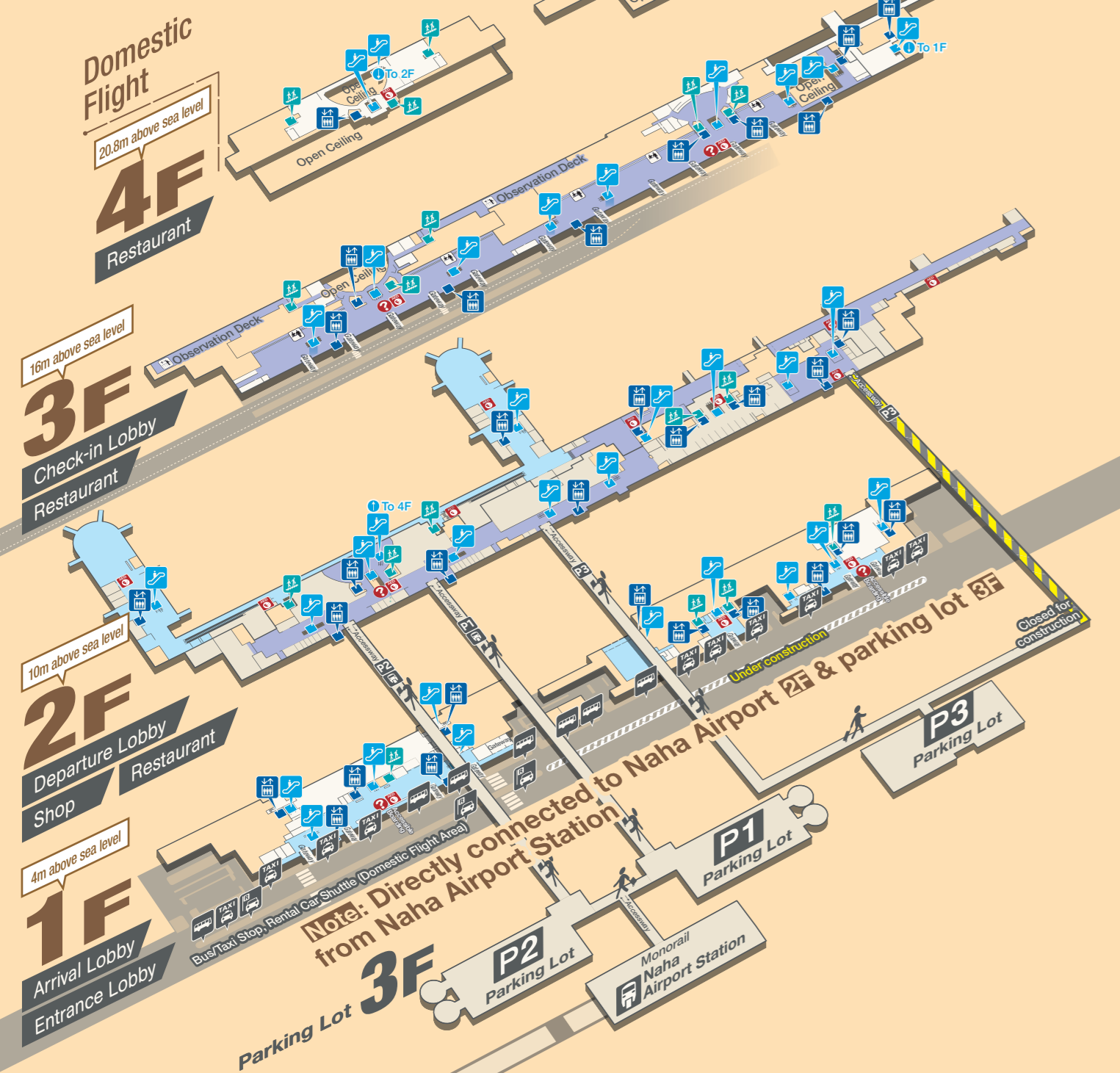
Police
 Domestic Flight: 1F International Flight: 1F
 ☎ 098-850-0110 (Domestic Flight Area)

* Please note that this service may not be available depending on the situation.

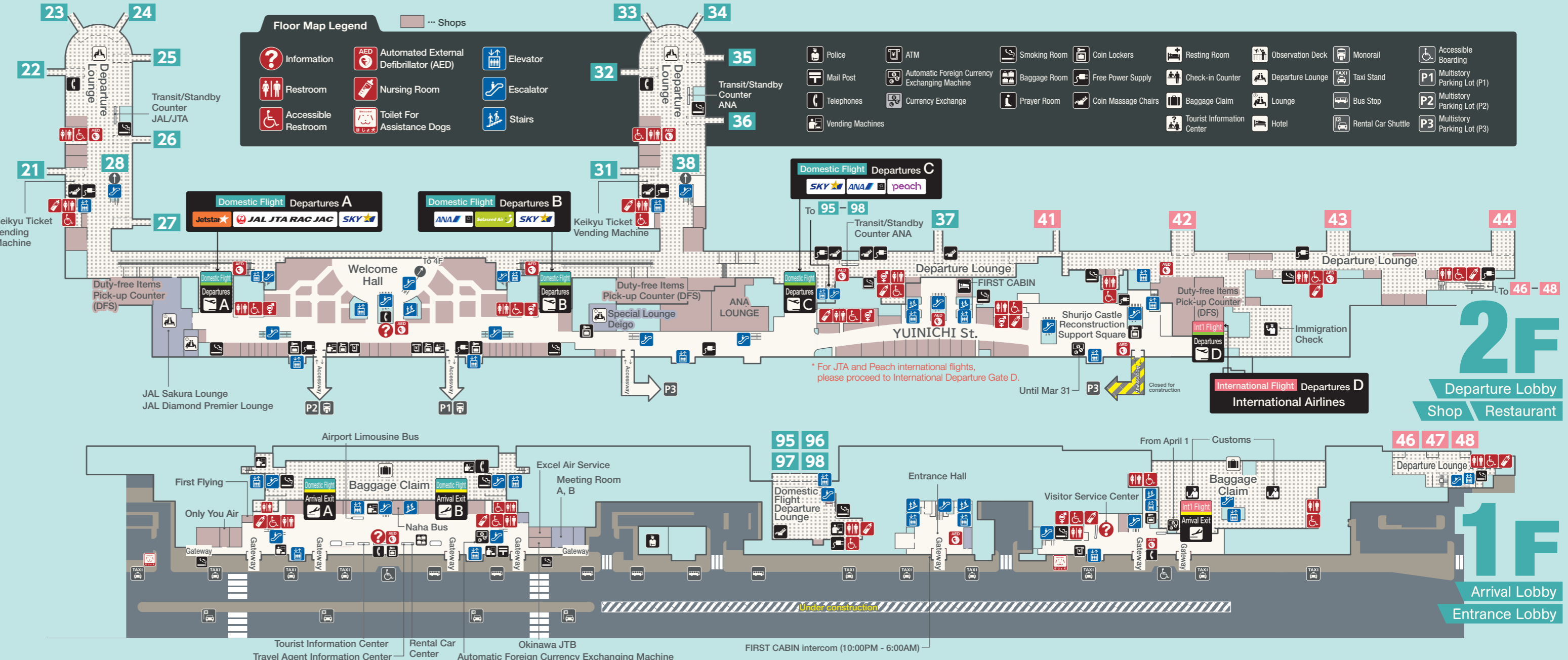
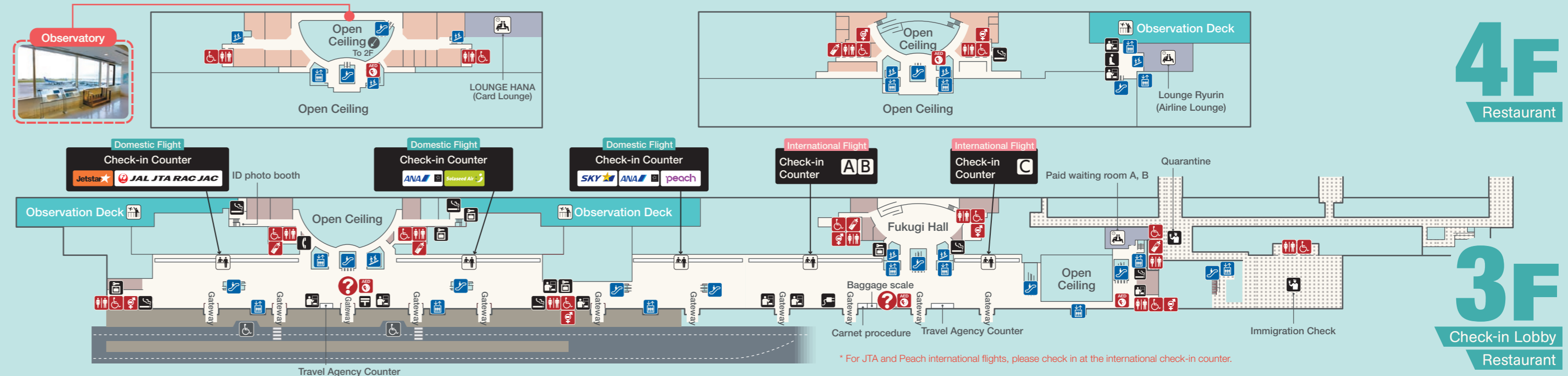
Airport Building 3D Map (Evacuation Area)

Evacuation Area Notes ■ In case of Fire/Earthquake ■ In case of Tsunami

- Elevator
- Escalator
- Stairs
- Accessway
- Information
- Monorail
- Multistory Parking Lot (P1)
- Automated External Defibrillator (AED)
- Taxi Stand
- Multistory Parking Lot (P2)
- Check-in Counter
- Bus Stop
- Multistory Parking Lot (P3)
- Observation Deck
- Rental Car Shuttle



Airport Building Floor Map



Floor Map Legend

- Information
- Restroom
- Accessible Restroom
- Automated External Defibrillator (AED)
- Nursing Room
- Toilet For Assistance Dogs
- Elevator
- Escalator
- Stairs
- Police
- Mail Post
- Telephones
- Vending Machines
- ATM
- Automatic Foreign Currency Exchanging Machine
- Currency Exchange
- Smoking Room
- Baggage Room
- Prayer Room
- Coin Lockers
- Free Power Supply
- Coin Massage Chairs
- Resting Room
- Check-in Counter
- Baggage Claim
- Lounge
- Tourist Information Center
- Hotel
- Observation Deck
- Monorail
- Taxi Stand
- Bus Stop
- Rental Car Shuttle
- Accessible Boarding
- Multistory Parking Lot (P1)
- Multistory Parking Lot (P2)
- Multistory Parking Lot (P3)