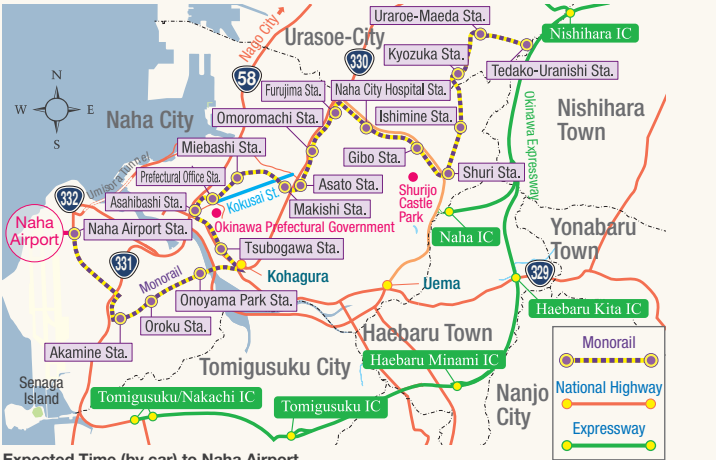
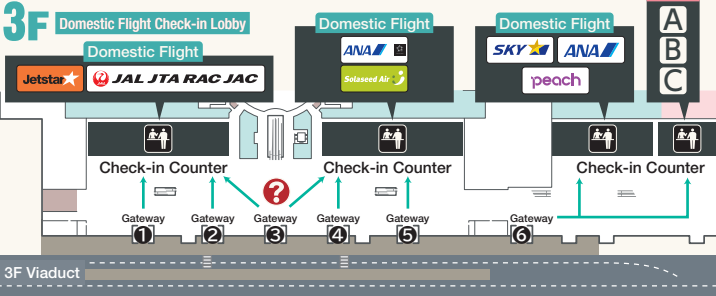


## Access Map around the airport

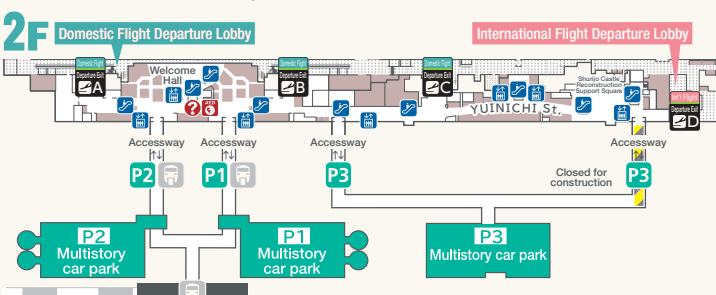


**Expected Time (by car) to Naha Airport**  
About 15 min. from Kokusa Street/ Tomigusuku/ Nakachi IC to Naha Airport.  
About 30 min. from Naha IC. About 40 min. from Shurijo Castle Park.  
\* Times shown above are average during time of light traffic and provided as reference.  
Please allow yourself extra time in case of traffic jam, especially when moving in Naha City.

## Guide map around Domestic Flight 3F Viaduct Gateway



## Access to Parking Lot



## Parking Lot

Open hour	6:00 - 24:00 (18 hr.)	* Business hours may change due to flight conditions.
Parking Capacity	Multistorey Parking Lot (P1) 621 cars Multistorey Parking Lot (P2) 625 cars Multistorey Parking Lot (P3) 1,226 cars	

## Parking Fee

Multistorey Parking Lot (P1, P2, P3)	7.5 hr. - 24 hr.	JPY 1,600
First 30 min.	Free	Every 24 hr. JPY 1,500
30 min. - 1 hr.	JPY 300	
1hr.-1.5hr.	JPY 450	
Every 30 min. (up to 7.5 hr.)	JPY 100	

\* Please contact (☎098-858-7626) the Parking Lot Office for more information.  
Please contact (☎0120-950-234) if you are calling from outside the prefecture using a mobile phone.



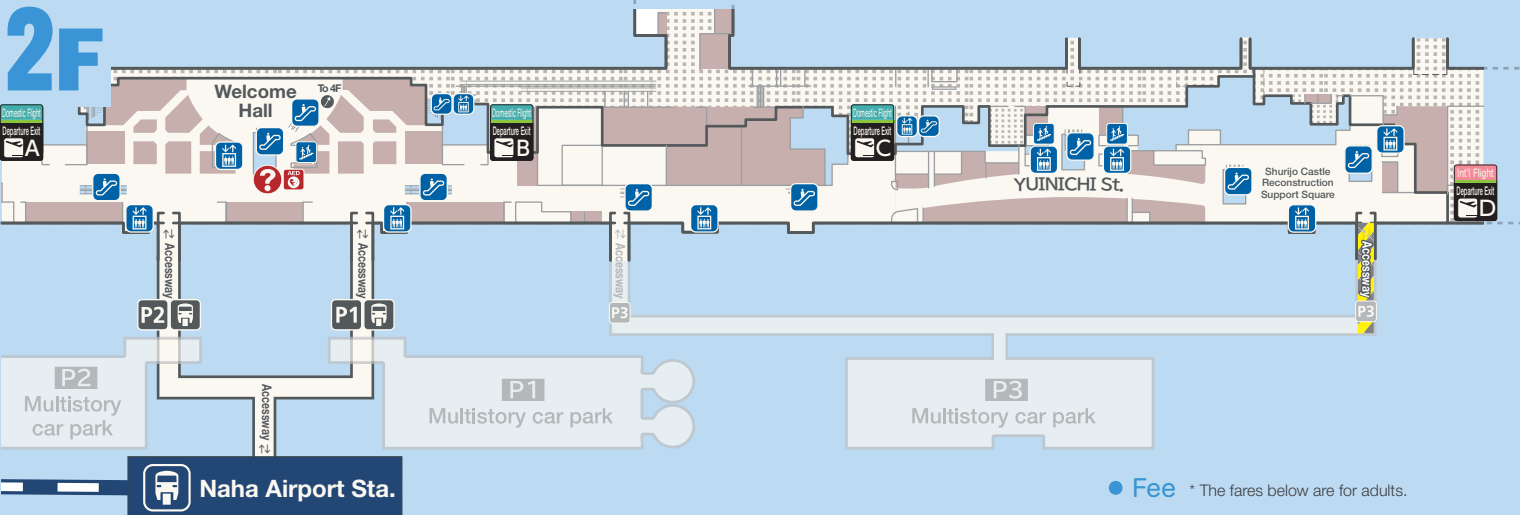
150, Kagamizu, Naha, Okinawa, 901-0142 http://www.naha-airport.co.jp  
[Information] TEL 098-840-1179

The data listed here is based on the information as of Feb. 2024 and may possibly change in the future.

## Transportation

### Route by monorail

#### Route for monorail station



#### Travel Section

From Naha Airport Station to Tedako-Uranishi Station (17 km/Expected time = 37 min.)

0	4	5	7	9	11	13	14	16	18	19	21	23	25	27	29	32	34	37
Naha Airport Sta.	Akamine Sta.	Oroku Sta.	Onoyama Park Sta.	Tsugogawa Sta.	Asahibashi Sta.	Prefectural Office Sta.	Mebashi Sta.	Makishi Sta.	Asato Sta.	Omomachi Sta.	Furujima Sta.	Naha City Hospital Sta.	Gibo Sta.	Shuri Sta.	Ishimine Sta.	Kozuka Sta.	Urasoe-Maeda Sta.	Tedako-Uranishi Sta.

Directly connected to Naha Bus Terminal

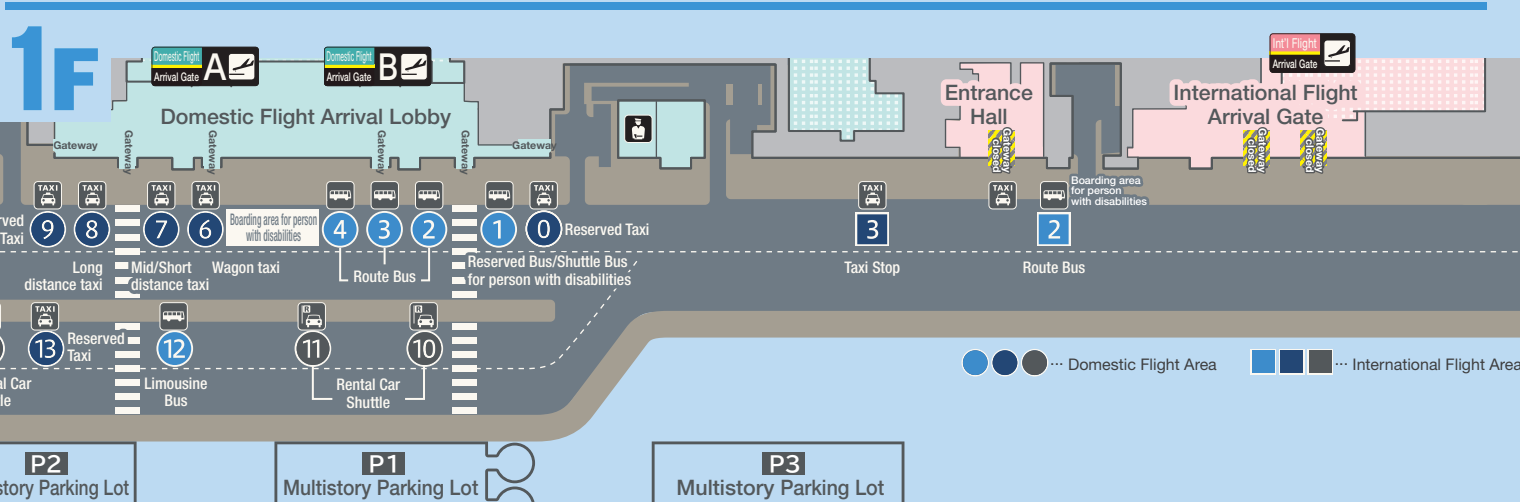
• Fee \* The fares below are for adults.

Starting fare: 230 JPY  
Maximum: 370 JPY

For more information,  
please visit the Okinawa  
Urban Monorail website.

<https://www.yui-rail.co.jp/>

### Route by bus/ taxi



#### Bus Stop

1	• Bus for person with disabilities	• Reserved Bus	• Shuttle Bus
2	• No. 111/Highway Express Bus	• No. 117/Highway Express Bus	
3	• No. 23/Gushikawa Line	• No. 113/Gushikawa-Airport Line	
4	• No. 26/Ginowan-Airport Line	• No. 120/Nagonishi-Airport Line	
	• No. 99/Ameku-Shintoshin Line	• No. 123/Ishikawa-Airport Line	
	• No. 125/Futenma-Airport Line		
	• No. 152/AEON Mall Okinawa Rycom (Highway) Line		

#### Airport Limousine Bus

Domestic Flight: 1F  
Convenient Limousine Bus that goes straight to the hotel  
☎098-869-3301 (11:00 - 19:00)

#### Naha Bus Information Center

Domestic Flight: 1F  
Information on one-day ticket, bus tours, bus routes, and other services. ☎098-840-1613 (9:00 - 18:00)

#### Taxi Stop

7	3	Mid/Short distance	• Naha City · Urasoe City · Ginowan City • Nishihara Town · Nakagusuku Village • South Area
8	3	Long distance	• Central area north of Chatan Town, Kitanakagusuku Village and beyond. • North Area

To Naha Bus Terminal/ by Taxi

Expected Time: about 15 min. Fee: about 1,000 JPY

\* The fee and time shown above is only an average estimation, and may change due to time or road conditions.

## Facility Guide

### To customers with children/with disability

#### Accessible Restroom

Domestic Flight: 1F, 2F, 3F, 4F  
International Flight: 1F, 2F, 3F, 4F

Restroom with facilities for people with disabilities. Anyone can use this restroom.

#### Ostomate

Domestic Flight: 2F  
International Flight: 1F, 2F, 3F

#### Resting Room

Domestic Flight: 1F ☎098-840-1179  
International Flight: 1F ☎098-840-1350  
\*Reservations are not accepted

#### Barrier-free Tour Center

Domestic Flight: 1F ☎098-858-7760

Baby carriages and wheelchairs are available free of charge at the check-in lobby on 3F or at each airline center. Also, toilet for assisting dogs are set at the south side of domestic terminal 1F and the side of international terminal 1F. Please dial the above number for assistance.

#### Nursing Room

Domestic Flight: 1F, Inside of 2F Gate, 3F  
International Flight: 1F, Inside of 2F Gate, 3F

Located in the restrooms on the 1F, 2F, and 3F. Diaper changing tables, bottle warmers and private rooms for nursing are available. \*Anyone may use the diaper changing tables.

### Other services

\* Business hours may change due to flight conditions.

#### Information

Domestic Flight: 1F, 2F, 3F ☎098-840-1179  
☎7:00 - 23:30  
International Flight: 1F, 3F ☎098-840-1350  
☎7:30 - 21:00



#### Lost-and-found Counter

☎9:00 - 19:00 ☎98-840-1357

#### Observation Deck

Domestic Flight: 3F ☎8:00 - 19:00  
International Flight: 4F ☎7:00 - 19:00  
Admission: free



#### Prayer Room

International Flight: 4F ☎98-840-1350  
☎7:00 - 22:00

A Japanese-style prayer room on the 4F of the international terminal is open to anyone looking for a quiet space to pray regardless of their religion.

#### Coin Operated Locker

Domestic Flight: 1F, 2F, 3F  
International Flight: 1F, 2F, 3F  
☎Expiry date: 3 days

We have L/M size coin lockers in the building.

#### Coin Operated Massage Chairs

Domestic Flight: 1F, 2F (inside the gate)

#### Free Power Outlets

Domestic Flight: 2F  
International Flight: 1F, 2F, 3F

#### Coin Operated PC

Domestic Flight: 1F, 2F (including inside of gate)  
International Flight: 2F (inside of gate)

### Bank/Police Box

\* Business hours may change due to flight conditions.

#### ATM/Cash Services

• Okinawa Bank <Weekdays> 6:30 - 22:00 <Sat, Sun, holidays> 7:30 - 22:00	• Japan Post Bank <All days> 6:00 - 23:55	• Seven Bank <Weekdays> 6:00 - 24:00 (Domestic Flight Area) 7:00 - 22:00 (International Flight Area) <Sat, Sun, holidays> 6:00 - 24:00 (Domestic Flight Area) 7:00 - 22:00 (International Flight Area)
• Okinawa Kaiho Bank <Weekdays> 7:00 - 22:00 <Sat, Sun, holidays> 8:00 - 22:00	• JA Okinawa <Weekdays> 7:00 - 22:00 <Sat, Sun, holidays> 9:00 - 20:00	• Aeon Bank <Weekdays> 6:00 - 24:00 <Sat, Sun, holidays> 6:00 - 24:00
• Ryukyu Bank <Weekdays> 7:00 - 22:00 <Sat, Sun, holidays> 8:00 - 21:00		

#### Automatic Foreign Currency Exchanging Machine

Domestic Flight: 1F ☎7:00 - 23:00

11 foreign currencies banknote can be exchanged into Japanese Yen.  
Corresponding currency: U.S. dollars, Euro, British pounds, Australian dollars, RMB, Korean won, Taiwan NT, HKD, Singapore dollars, Canada dollars, and Thai bahts.

#### Currency Exchange

International Flight: 2F  
• Travellex Naha Airport, Arrival Lobby  
☎7:00 - 21:00 ☎098-967-0865  
\*Foreign currency exchange only

#### Police Box

Domestic Flight: 1F International Flight: 1F  
☎098-850-0110 (Domestic Flight Area)

## English

# OKA

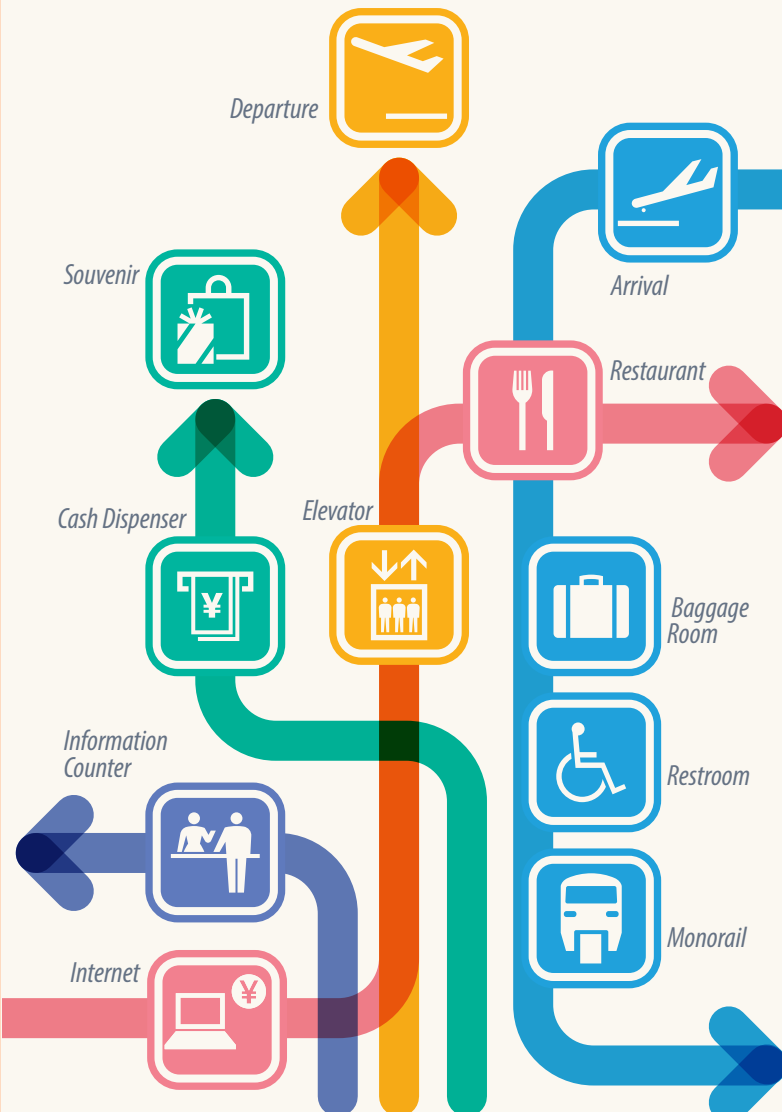
### Domestic Flight Area

### International Flight Area

### Naha Airport Passenger Terminal Building

# Floor Guide Map

### Facilities, service information guide





(Evacuation Area)

Evacuation Area Notes ☐ In case of Fire/Earthquake ☐ In case of Tsunami

