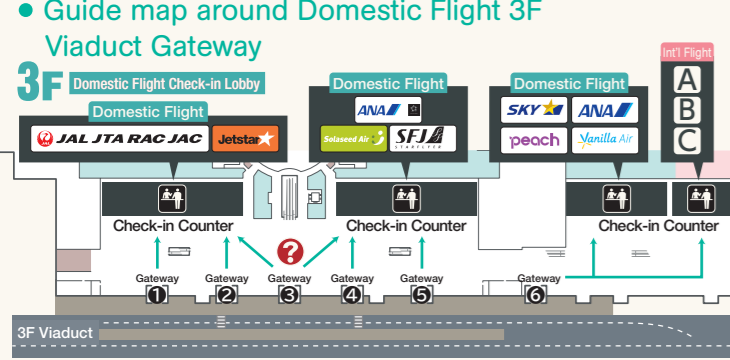


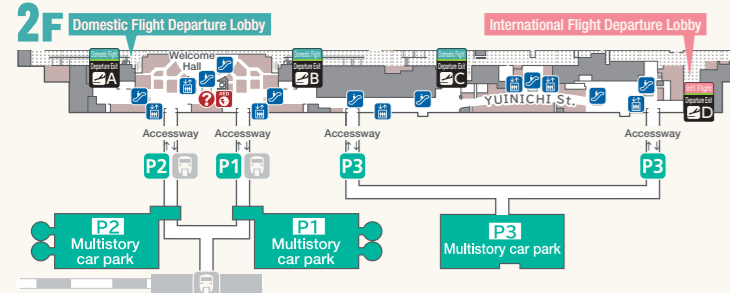
• Access Map around the airport



**Expected Time (by car) to Naha Airport**  
 About 15 min. from Kokusai Street/ Tomigusuku/ Nakachi IC to Naha Airport.  
 About 30 min. from Naha IC. About 40 min. from Shurijo Castle Park.  
 \* Times shown above are average during time of light traffic and provided as reference. Please allow yourself extra time in case of traffic jam, especially when moving in Naha City.



• Access to Parking Lot



**P Parking Lot**

Open hour	6:00 - 24:00 (18 hr.) * Open hour may change due to the flight situations.		
Parking Capacity	Multistorey Parking Lot (P1) Space: 621	Multistorey Parking Lot (P2) Space: 625	Multistorey Parking Lot (P3) Space: 1,226

• **Parking Fee**

Multistorey Parking Lot (P1, P2, P3)			
First 30 min.	Free	6.5 hr. - 24 hr.	JPY 1,500
30 min. - 1 hr.	JPY 350	Every 24 hr.	JPY 1,500
Every 30 min.	JPY 100		

\* Please contact (☎ 098-858-7626) the Parking Lot Office for more information.  
 Please contact (☎ 0120-950-234) if you are calling from outside the prefecture using a mobile phone.

**welcome NAHA AIRPORT BUILDING CO., LTD.**

150, Kagamizu, Naha, Okinawa, 901-0142 <http://www.naha-airport.co.jp>  
 [Information] TEL 098-840-1179

The data listed here is based on the information as of Mar. 2019 and may possibly change in the future.

Issued in Mar. 2019

Transportation

Route by monorail

• Route for monorail station

**Naha Airport Sta.**

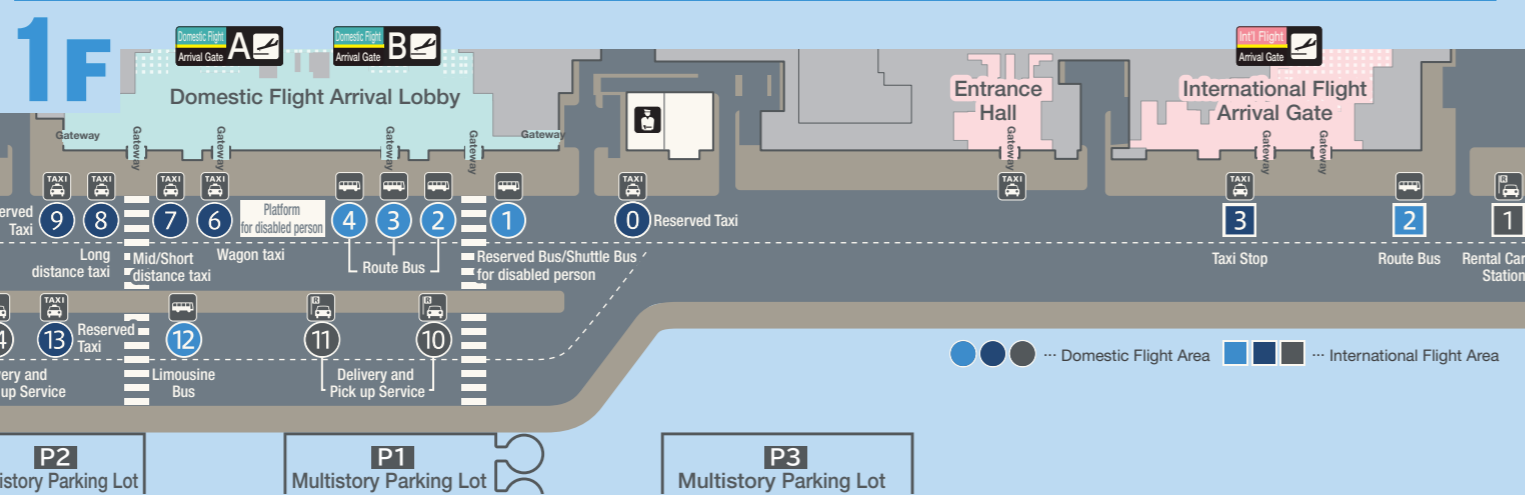
• **Fee** Starting fare: 230 JPY, Maximum: 330 JPY  
 \* Above is the fee for adults  
 Please visit our website at "Okinawa City Monorail" for more details  
<https://www.yui-rail.co.jp/>

• **Travel Section** From Naha Airport Station to Shuri Station (12.9 km/Expected time=27 min.)

0	4	5	7	9	11	13	14	16	18	19	21	23	25	27
Naha Airport Sta.	Akamine Sta.	Oroku Sta.	Onoyama Park Sta.	Tsubogawa Sta.	Asashibashi Sta.	Prefectural Office Sta.	Miebashi Sta.	Makishi Sta.	Asato Sta.	Onomachi Sta.	Furujima Sta.	Naha City Hospital Sta.	Gibo Sta.	Shuri Sta.

↑  
 Directly connected to Naha Bus Terminal

Route by bus/ taxi



Bus Stop	Taxi Stop
<p>① • Bus for disabled person • Reserved Bus • Shuttle Bus</p> <p>② ② • No.111/Highway Express Bus • No.117/Highway Express Bus (Direct to Churaumi Aquarium)</p> <p>③ ② • No.23/Gushikawa Line • No. 120/Nagonishi-Airport Line • No. 26/Ginowan-Airport Line • No. 123/Ishikawa-Airport Line • No. 99/Ameku-Shintoshin Line • No. 125/Futenma-Airport Line • No.113/Gushikawa-Airport Line</p> <p>④ • No. 95/Airport-Ashibina Line</p>	<p>⑦ ③ Mid/Short distance • Naha City · Urasoe City · Ginowan City • Nishihara Town · Nakagusuku Village • South Area</p> <p>⑧ ③ Long distance • The top north side of the Central Area from Chatan Town and Kitanakagusuku Village • North Area</p>

**To Naha Bus Terminal/ by Taxi**

- Expected Time: about 15 min. ■ Fee: about 1,000 JPY

\* The fee and time shown above is only an average estimation, and may change due to time or road conditions.

▶ **Airport Limousine Bus** Domestic Flight: 1F  
 Convenient Limousine Bus that goes straight to the hotel  
 ☎ 098-869-3301 (11:00 - 19:00)

▶ **Naha Bus Information Center** Domestic Flight: 1F  
 Information on one-day ticket, bus tours, bus routes, and other services.  
 ☎ 098-840-1613 (9:00 - 18:00)

Facility Guide

To customers with children/with disability

**Accessible Restroom**  
 Domestic Flight: 1F, 2F, 3F, 4F  
 International Flight: 1F, 2F, 3F, 4F

Restroom that provides special toilet seat for disabled person and ostomate support.

**Multipurpose Restroom (Ostomate)**  
 Domestic Flight: 1F, 2F, 3F  
 International Flight: 1F, 2F, 3F

**Resting Room**  
 Domestic Flight: 1F ☎ 098-840-1179  
 International Flight: 1F ☎ 098-840-1350  
 Reception/Information \*Reservations are not accepted

**Barrier-free Tour Center**  
 Domestic Flight: 1F ☎ 098-858-7760

Baby carriages and wheelchairs are available free of charge at the check-in lobby on 3F or at each airline center. Also, toilet for assisting dogs are set at the south side of domestic terminal 1F and the side of international terminal 1F. Please dial the above number for assistance.

**Nursing Room**  
 Domestic Flight: 1F, Inside of 2F Gate, 3F  
 International Flight: 1F, Inside of 2F Gate, 3F

It is available at each restroom on 1F, 2F, and 3F. It also has baby bed and milk formulating unit. Unisex nursing room is also available.

Others Services

**Information**  
 Domestic Flight: 1F, 2F, 3F ☎ 098-840-1179  
 ☎ 7:30 - 23:30  
 International Flight: 1F, 3F ☎ 098-840-1350  
 ☎ 8:00 - 21:00

**Airline Tour Desk**  
 Domestic Flight: 1F

For those using ANA Sky Holiday Tour, please sign-out at the tour desk in the baggage claim area before exiting the arrival gate.

**Keikyu/Tokyo Monorail Ticket Vending Machine**  
 Domestic Flight: 2F (inside the gate)

**Observation Deck**  
 Domestic Flight: 3F ☎ 8:00 - 19:00  
 International Flight: 4F ☎ 7:00 - 19:00  
 Admission: free

**Prayer Room**  
 International Flight: 4F ☎ 098-840-1350  
 ☎ 7:00 - 22:00

A Japanese-style prayer room on the 4F of the international terminal is open to anyone looking for a quiet space to pray regardless of their religion.

**Coin Operated Locker**  
 Domestic Flight: 1F, 2F, 3F  
 International Flight: 1F, 2F, 3F  
 ☎ 098-840-1179 (information in case of malfunction)  
 Expiration date: 3 days

We have L/M size coin lockers in the building. All time-limited coin lockers will charge extra fee after 12:00am each day no matter when you start using.

**Coin Operated Massage Chairs**  
 Domestic Flight: 2F (inside the gate)  
 International Flight: 2F

**Free Power Outlets**  
 Domestic Flight: 2F  
 International Flight: 1F, 2F, 3F

**Coin Operated PC**  
 Domestic Flight: 1F, 2F  
 International Flight: 1F, 2F

Bank/Police Box

ATM/Cash Services

- Okinawa Bank <Weekdays> 7:00 - 22:00 <Sat, Sun, holidays> 8:00 - 21:00
- Okinawa Kaiho Bank <Weekdays> 7:00 - 22:00 <Sat, Sun, holidays> 8:00 - 22:00
- Ryukyu Bank <Weekdays> 7:00 - 22:00 <Sat, Sun, holidays> 8:00 - 21:00
- Koza Shinkin Bank <Weekdays> 7:00 - 22:00 <Sat & holidays> 7:00 - 21:00 <Sundays> 8:00 - 21:00
- Japan Post Bank <Weekdays> 7:00 - 22:00 <Sat, Sun, holidays> 8:00 - 21:00
- JA Okinawa <Weekdays> 7:00 - 22:00 <Sat, Sun, holidays> 9:00 - 20:00
- Seven Bank <Weekdays> 6:00 - 24:00 (Domestic Flight Area) 7:00 - 22:00 (International Flight Area) <Sat, Sun, holidays> 6:00 - 24:00 (Domestic Flight Area) 7:00 - 22:00 (International Flight Area)
- Aeon Bank <Weekdays> 6:00 - 24:00 <Sat, Sun, holidays> 6:00 - 24:00

**Ryukyu Bank**  
 Domestic Flight: 1F ☎ 098-857-6898 (Counter)  
 ☎ Weekdays 9:00 - 16:00 (Sat, Sun, holidays/ Closed)  
 ATM inside the store <Weekdays> 7:00 - 22:00 <Sat, Sun, holidays> 8:00 - 21:00

**Currency Exchange/ Interpretation**  
 International Flight: 1F ☎ 098-891-8880  
 ☎ 9:00 - 21:00 Tisco Japan, Inc.

Foreign Currency Exchange, overseas remittance, overseas (domestic) traveling insurance, Wi-Fi rental, domestic SIM card service.

**Police Box**  
 Domestic Flight: 1F International Flight: 1F  
 ☎ 098-850-0110 (Domestic Flight Area)

**Automatic Foreign Currency Exchanging Machine**  
 Domestic Flight: 1F ☎ 7:00 - 23:00

11 foreign currencies banknote can be exchanged into Japanese Yen. Corresponding currency: U.S. dollars, Euro, British pounds, Australian dollars, RMB, Korean won, Taiwan NT, HKD, Singapore dollars, Canada dollars, and bahts.

English

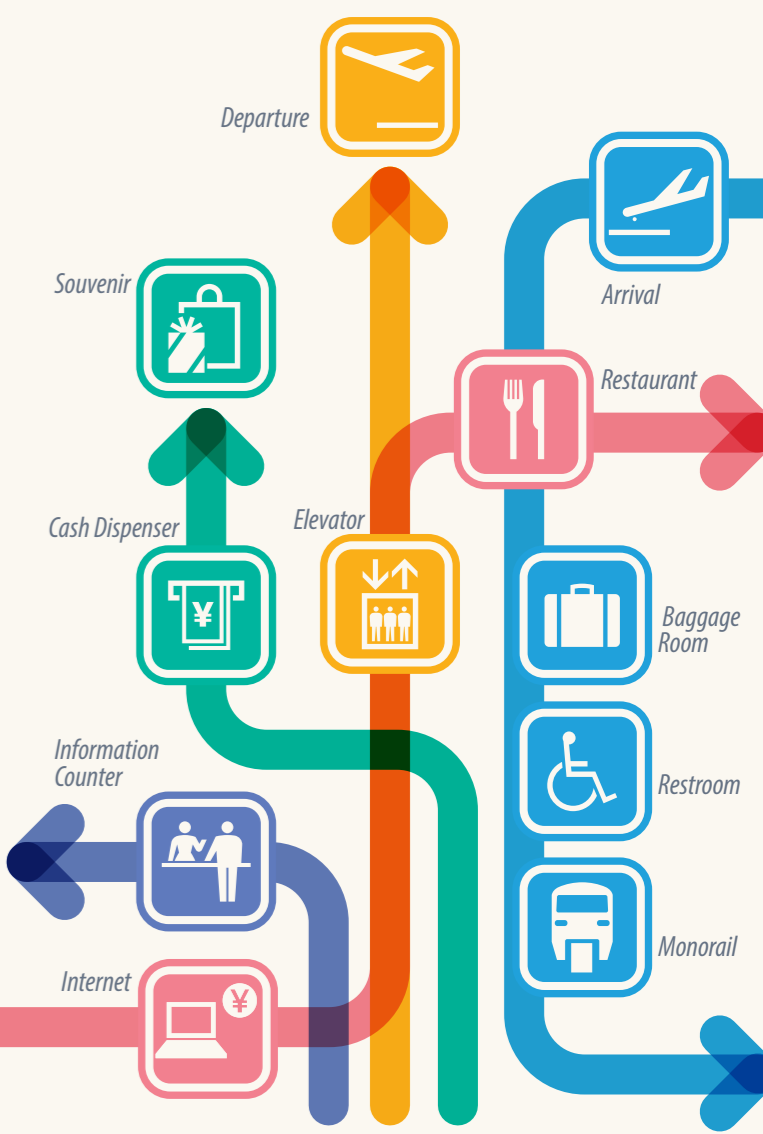
**OKA**

**Domestic Flight Area  
 International Flight Area**

**Naha Airport Passenger Terminal Building**

**Floor Guide Map**

Facilities, service information guide

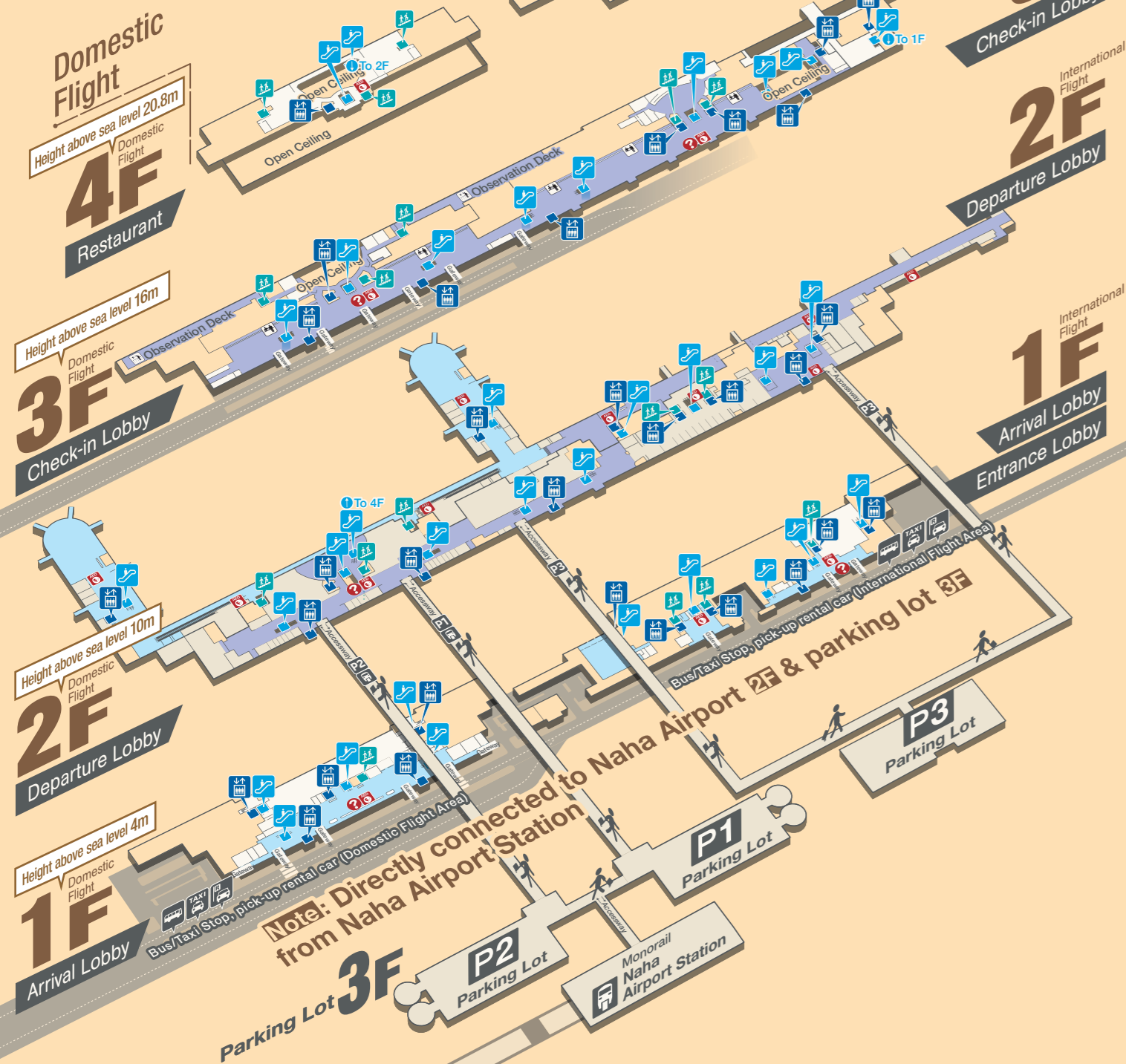


**welcome NAHA AIRPORT BUILDING**

# Floor Map (Evacuation Area)

Evacuation Area Notes ■ In case of Fire/Earthquake ■ In case of Tsunami

- |                                  |                            |                                |                                |
|----------------------------------|----------------------------|--------------------------------|--------------------------------|
| Elevator                         | Escalator                  | Stairs                         | Accessway                      |
| Information                      | Monorail                   | P1 Multistory Parking Lot (P1) | P2 Multistory Parking Lot (P2) |
| Automated External Defibrillator | Taxi Stop                  | P3 Multistory Parking Lot (P3) |                                |
| Check-in Counter                 | Bus Stop                   |                                |                                |
| Observation Deck                 | Rental Car Pick-up Service |                                |                                |



Floor Map

International Flight

